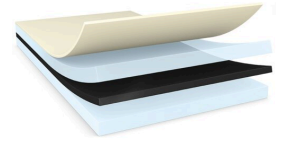


tesa® 51928

Product Information



125µm double sided black filmic tape

Product Description

tesa® 51928 is a double-sided self-adhesive tape consisting of a black PET backing and a modified acrylic adhesive.

Product Features

- An excellent balance of good holding power and bonding performance
- Sufficient bond even to critical surfaces such as diverse foams and rubber materials and at elevated temperatures.
- High initial tack to immediately grab to the bonding surface

Application Fields

- Mounting of batteries to battery packs in Electronic devices
- Mounting of ABS plastic parts in the automotive industry
- Mounting of decorative profiles and mouldings in the furniture industry

Technical Information (average values)

The values in this section should be considered representative or typical only and should not be used for specification purposes.

Product Construction

- | | | | |
|--------------------|-------------------|-------------------|--------|
| • Backing material | PET film | • Total thickness | 125 µm |
| • Type of adhesive | tackified acrylic | • Colour | black |

Properties/Performance Values

- | | | | |
|--------------------------|-----------|--|-----------|
| • Elongation at break | 50 % | • Static shear resistance at 23°C | good |
| • Tensile strength | 20 N/cm | • Static shear resistance at 40°C | good |
| • Ageing resistance (UV) | very good | • Tack | very good |
| • Chemical resistance | good | • Temperature resistance long term duration | 100 °C |
| • Humidity resistance | very good | • Temperature resistance short term duration | 200 °C |
| • Softener resistance | good | | |

tesa® 51928

Product Information

Adhesion to Values

• ABS (initial)	8.2 N/cm	• PET (after 14 days)	8.7 N/cm
• ABS (after 14 days)	9.7 N/cm	• PP (initial)	4.8 N/cm
• Aluminium (initial)	8.1 N/cm	• PP (after 14 days)	6.4 N/cm
• Aluminium (after 14 days)	11.1 N/cm	• PS (initial)	8.8 N/cm
• PC (initial)	10.3 N/cm	• PS (after 14 days)	9.4 N/cm
• PC (after 14 days)	11.5 N/cm	• PVC (initial)	7.2 N/cm
• PE (initial)	4.9 N/cm	• PVC (after 14 days)	10.1 N/cm
• PE (after 14 days)	5.4 N/cm	• Steel (initial)	9.6 N/cm
• PET (initial)	7.4 N/cm	• Steel (after 14 days)	12 N/cm

Additional Information

Liner variants:

PV0 brown glassine paper (71µm; 82g/m²)

Disclaimer

tesa® products prove their impressive quality day in, day out in demanding conditions and are regularly subjected to strict controls. All information and recommendations are provided to the best of our knowledge on the basis of our practical experience. Nevertheless tesa SE can make no warranties, express or implied, including, but not limited to any implied warranty of merchantability or fitness for a particular purpose. Therefore, the user is responsible for determining whether the tesa® product is fit for a particular purpose and suitable for the user's method of application. If you are in any doubt, our technical support staff will be glad to support you.



For latest information on this product please visit <http://l.tesa.com/?ip=51928>