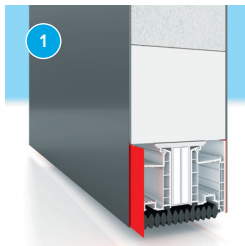


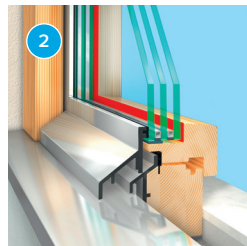
# Fast, clean, safe. That simplifies a lot.

tesa® solutions for the door and window industry



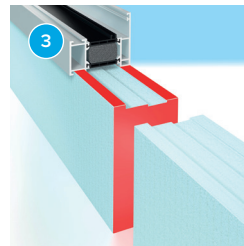
## Door panel bonding with tesa ACX<sup>plus</sup> 707x

- High temperature and UV resistance
- Sealing against dirt and moisture
- Immediate bonding without curing
- Performance in differential climate tests proven
- Increased burglary protection (RC2 and RC3 certification possible)



## Dry Glazing with tesa® ACX<sup>plus</sup> 707x

- Simplified profile geometry
- Savings in frame materials
- Improved burglary protection (RC2 certification possible)



## Bonding of substructure insulation profile with tesa® 4965 and 62932

- Good adhesive strength on plastic, metal and wood
- tesa® 4965 Original**
- Next Gen:**
- Optimal for intensive use
  - PCR PET Backing and biomass-balanced acrylate adhesive
- tesa® 62932:**
- Efficient compensation of gap tolerances and uneven surfaces
  - Very good moisture resistance



## Sealing of the profiles with tesa® 60077

- Flexible PE-based sealing tape
- Moisture and airtight sealing (according to DIN 4108-11)
- Extremely high and durable adhesive strength
- Simple and time-saving processing

## Adhesive tapes

Product family	Product	Thickness [µm]	Backing	Adhesive	Color	Final adhesive strength on steel [N/cm]
tesa® ACX <sup>plus</sup> 707x	tesa® ACX <sup>plus</sup> 7072	500	Geschäumter Acrylatkern	Reinacrylat	Schwarz	27
	tesa® ACX <sup>plus</sup> 7074	1,000				30
	tesa® ACX <sup>plus</sup> 7076	1,500				32
	tesa® ACX <sup>plus</sup> 7078	2,000				37
	tesa® ACX <sup>plus</sup> 70730	2,900				38
	tesa® ACX <sup>plus</sup> 70740	3,900				38
	tesa® 4965 Original Next Gen	205	PET	Modifiziertes Acrylat	Transparent	11.8
	tesa® 62932	500	PE-Schaum	Modifiziertes Acrylat	Schwarz/weiß	17
	tesa® 60077	290	PE-Film	Acrylat	Grün	14

## Adhesion promoters and application tool

Product family	Product	Description
Adhesion promoter	tesa® 60150	Universal adhesion promoter: Enhances bonding strength to various substrates.
	tesa® 60151	Adhesion promoter for glass: Specifically enhances permanent bonding strength to glass.
	tesa® 60153	Fast curing adhesion promoter: Increases immediate adhesion and enhances bonding strength to various substrates.
Application tool	tesa® 6040 PV21	Application tool for profile bonding.



**tesa® ACX<sup>plus</sup> 7074 – ift proof of performance**  
Differential climate test with entrance door  
• Report no. 14-002596-PR04

**tesa® ACX<sup>plus</sup> 7078 – ift proof of performance**  
Adhesive bond in accordance with ift guideline VE-08/1, Part 1  
• Report no. 10-000666-PB01



tesa SE  
Phone: +49 40 88899 0  
tesa.com/company/locations

tesa® products prove their impressive quality day in, day out in demanding conditions and are regularly subjected to strict controls. All technical information and data above Membership to associations: mentioned are provided to the best of our knowledge on the basis of our practical experience. They shall be considered as average values and are not appropriate for a specification. Therefore tesa SE can make no warranties, express or implied, including, but not limited to any implied warranty of merchantability or fitness for a particular purpose. The user is responsible for determining whether the tesa® product is fit for a particular purpose and suitable for the user's method of application. If you are in any doubt, our technical support staff will be glad to support you.