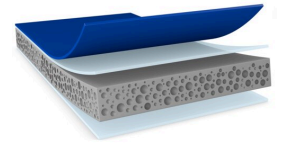


# tesa<sup>®</sup> 77811

## Primerless Line



### Product Information

1.1 mm double-sided acrylic foam tape for mounting of automotive exterior attachment part.

### Product Description

tesa<sup>®</sup> ACX<sup>plus</sup>

### Product Features

Features:

- # High initial performance on LSE plastics and difficult-to-bond OEM clear coats
- # Excellent bonding stability at a wider range of temperatures
- # Reaches high peel-adhesion level right after application
- # Superior peel adhesion on PP substrates, even at an application temperature as low as 5°C
- # Viscoelastic acrylic foam core to compensate for different thermal elongation of bonded parts
- # Outstanding wet-out property
- # High humidity and UV resistance

Benefits:

- # Eliminates the primer in the production process
- # Enables a much more efficient and robust application
- # Reduces the total process cost
- # Realizes healthier working conditions
- # Achieves a more environmentally friendly production

### Application Fields

Primerless Line

For latest information on this product please visit <http://l.tesa.com/?ip=77811>

# tesa<sup>®</sup> 77811

## Primerless Line

### Product Information

### Technical Information (average values)

The values in this section should be considered representative or typical only and should not be used for specification purposes.

### Applications

• Backing	Acrylic foam	• Total thickness	1100 µm
• Type of adhesive	LSE	• Color	grey
• Type of liner	PE	• Color of liner	blue

### Properties/Performance Values

• Ageing resistance (UV)	good	• Static shear resistance at 90°C	good
• Humidity resistance	very good	• T-block	very good
• L-jig	good	• Temperature range	-40 to +80 °C

### Adhesion to Values

• ABS (after 3 days)	31 N/cm	• Steel (after 14 days)	35 N/cm
• ABS (initial, after 1 minute)	29 N/cm	• Steel (after 3 days)	35 N/cm
• PP (after 3 days)	38 N/cm	• Steel (initial, 1 min)	32 N/cm
• PP (initial, 1 min)	33 N/cm		

### Disclaimer

tesa<sup>®</sup> products prove their impressive quality day in, day out in demanding conditions and are regularly subjected to strict controls. All information and recommendations are provided to the best of our knowledge on the basis of our practical experience. Nevertheless tesa SE can make no warranties, express or implied, including, but not limited to any implied warranty of merchantability or fitness for a particular purpose. Therefore, the user is responsible for determining whether the tesa<sup>®</sup> product is fit for a particular purpose and suitable for the user's method of application. If you are in any doubt, our technical support staff will be glad to support you.



For latest information on this product please visit <http://l.tesa.com/?ip=77811>