

About us

We are a reliable partner for the railway industry

We are a partner you can count on

It is our business to support you and your products during the entire product-development process on a daily basis. Our numerous sales offices, our research and development department, and our production facilities offer worldwide assistance wherever our customers are located. Whether the adhesive tape is needed for masking while painting, mounting or fixating, surface protection, vibration and noise damping, or any form of floor fixing: tesa adhesive tapes offer you a complete solution for your application in the railway industry.

No matter what your production process or how you want to apply your tape: we deliver the tape in the format you need for your application.



Our tape assortment offers you:

- Wide variety of products for different applications
Specific solutions for your individual process needs
- Fast and flexible implementation
High production efficiency
- Rolls, die-cuts, and dispensers

Global support for mobility on rails



tesa® products prove their impressive quality day in, day out in demanding conditions and are regularly subjected to strict controls. All technical information and data above mentioned are provided to the best of our knowledge on the basis of our practical experience. They shall be considered as average values and are not appropriate for a specification. Therefore tesa SE can make no warranties, express or implied, including, but not limited to any implied warranty of merchantability or fitness for a particular purpose. The user is responsible for determining whether the tesa® product is fit for a particular purpose and suitable for the user's method of application. If you are in any doubt, our technical support staff will be glad to support you.



Product	Adhesive	Backing	Liner	Thickness	Features
Masking					
4334	Acrylic	Washi paper	-	90 µm	Straight-line masking • Sharp, clean paint lines. Ideal for 2-tone masking • Works with water & solvent-based paints
4174	Natural rubber	PVC film	-	110 µm	Curved fine-line masking & masking for sealing processes • Excellent masking on painted & unpainted surfaces. Good conformability with multidimensional surfaces. • Residue-free up to 150 °C for 1 h
4378	Natural rubber	slightly-creped paper	-	170 µm	Large-area masking • Professional masking for industrial & auto spray jobs • Fast & easy large-area coverage
4432	Natural rubber	Flat paper	-	330 µm	General masking • Tough masking tape with strong adhesive & stable backing • Ideal for sandblasting glass, mirrors & stone
Mounting					
707x	Pure acrylic	Foamed acrylic	-	500 - 2000 µm	Permanent mounting • Temperature and shear resistance with an outstanding cold shock resistance up to -40°. The viscoelastic core is able to compensate for thermal elongations of bonded parts.
55576	Acrylic	PE foam	PE-coated paper	1200 µm	Pre-mounting of small parts • Excellent for light duty mounting applications • Lightweight & Flexible
4952	Tackified acrylic	PE foam	glassine	1150 µm	Mirror mounting • High tack on different type of surfaces. UV, water & aging resistant for outdoor use
Protection					
51136	Acrylic	PE film	-	110 µm	Temporary surface protection • Good adhesion, clean removal. Works on PP, ABS & textiles • Easy to dispose & Eco friendly
52994	Acrylic	PU film	PET	187 µm	Permanent surface protection • Resistant and durable against mechanical and environmental forces • Long-term UV resistance and self-healing properties without turning yellow
4651	Natural rubber	Acrylic-coated cloth	paper	310 µm	Insulation protection • Conformable with high tack, excellent abrasion resistance, high tensile strength, and strong adhesion to rough surfaces. Manual tearable with clean edges both ways. • Classification according FMVSS302: SE/NBRI & 68% bio-based content (by weight, excl. liner).
Floor					
522xx	Water-based acrylic	Non-woven	glassine	100 - 150 µm	Carpet fixing • Low total VOC according to VDA 278 analysis and GB 27630 • Strong adhesion, even on low surface energy surfaces, onpolar plastics (PP) and composites (recycled materials). Highly conformable
706x	Tackified acrylic	Foamed acrylic	-	500 - 1500 µm	Fixation of floor profiles • High immediate tack & adhesion even on substrates with a low surface energy. Resists plasticizer effects • The viscoelastic core is able to compensate for thermal elongations of bonded parts.
tesa® 4965 Original	Biomass-balanced tackified acrylic	Post consumer recycled PET / Glassline brown	MOPP	205 µm	Fixation of floor profiles • Suitability for most demanding applications such as heavy stress, high temperatures or critical substrates • Certified by UL standard 969 (UL file: MH 18055). Total of 62% biocarbon content (including red MOPP liner)
Anti slip					
6095x	Acrylic	PVC film coated with mineral particles / Aluminum carrier coated with mineral particles	-	750 - 1365 µm	Floor anti slip • The strong adhesive mass of acrylate ensures safe footing on the underlying surface. Resistant to wear, chemicals & salt water • Easy to tear by hand and remove without any difficulties. Anti-slip effect lasts up to two years with normal use./ Certified to DIN 51130 safety standards
60973	Modified acrylic	PVC film	PE-coated paper	900 µm	Roofing anti slip • High adhesion to a wide range of substrates. Durable backing with good abrasive particle anchorage. Resistant to chemical & weathering. • EN 45545-2 / ISO 5658-2 Lateral flame spread certified (railway standard)
Flame retardant					
450xx	Acrylic	PET backing / Acrylic core / PE	PET	200 - 1200 µm	Permanent mounting, Mirror mounting, Carpet fixing & Fixation of floor profiles • Flame retardant (UL94, FMVSS 302) & Halogen free • Strong acrylic core for demanding applications. Viscoelastic & high-performance adhesive

tesa tape Asia Pacific
+65 6697 9888

tesa.com

06/2025



Our tapes for various railway applications

Highest performance

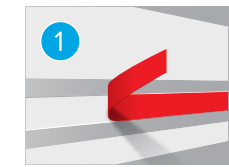
Mobility on track

Efficient adhesive solutions

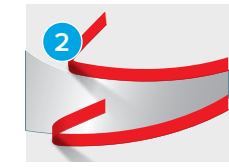
We offer a wide range of specially developed tapes that effectively meet the application requirements of the railway industry around the globe.

The result: an assortment of adhesives, liners, and backings providing custom bonding solutions for a diverse field of business. Our high quality tapes ensure an optimized solution that will speed up your processes and result in less reworking.

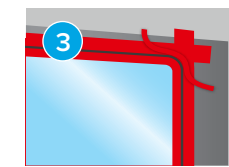
Masking



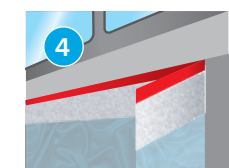
Straight-line masking
Sharp-edged masking of long straight lines, excellent for two-tone applications.
tesa® 4334



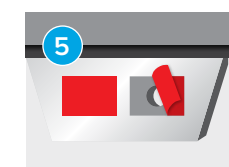
Curved fine-line masking
Sharp-edged masking for complex and curved lines, good conformability to curves.
tesa® 4174



Masking for sealing processes
Precise masking of window and railcar body for window-sealing processes.
tesa® 4174

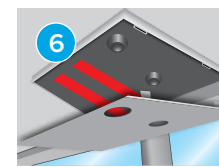


Large-area masking
For fast, efficient, and simple covering of large areas.
tesa® 4378

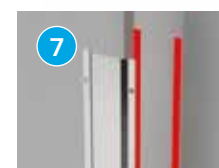


General masking
Covering of different parts during various processes – for example for sandblasting or painting processes.
tesa® 4432

Mounting



Permanent mounting
Permanent bonding of metal or plastic parts to different surfaces – indoor and outdoor.
tesa® 450xx / tesa® 707x



Pre-mounting of small parts
Preliminary bonding of small parts to ensure better positioning before mechanical fixing.
tesa® 55576

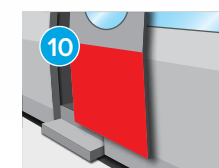


Mirror mounting
Permanent fastening of mirror or glass panes on wall panels. Mechanical de-mounting of the tape is possible.
tesa® 450xx / tesa® 4952

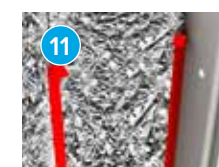
Protection



Temporary surface protection
Protection of delicate surfaces during production, transportation, and maintenance work – indoor and outdoor.
tesa® 51136

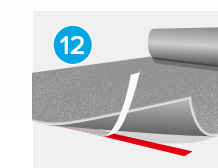


Permanent surface protection
Permanent protection of exposed areas – indoor and outdoor.
tesa® 52994

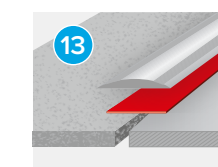


Insulation protection
Protection and fixation of insulation materials and body parts.
tesa® 4651

Floor

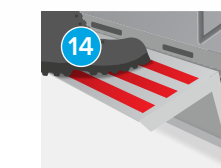


Carpet fixing
Secure adhesion but easy removability for exchange of carpets with artificial floor coverings.
tesa® 450xx / tesa® 522x



Fixation of floor profiles
Permanent mounting of different floor profiles.
tesa® 450xx / tesa® 706x

Anti-slip



Floor anti-slip
Ideal protection against slipping on steps or walkways.
tesa® 6095x



Roofing anti-slip
Ideal protection against slipping on the roof when maintenance work is necessary.
tesa® 60973



Further applications

Sandblasting

Complete or partial masking of surfaces to protect against physical damage.

Powder coating

Masking of areas not to be coated during powder-coating processes.

Cable fixation/cable bundling

Attachment/bundling of cables during assembly processes or permanently.

Vibration and noise damping

Separating different types of materials to prevent rattling, friction, or squeaking – good noise damping properties.

Wire harnessing

Bundling of wires – also in combination with noise damping.

Identification labels/laser labels

Permanent identification or marking of individual components.

Floor marking

Permanent marking of dangerous or restricted zones.

General cloth-tape applications

Permanent protection of sensitive areas.