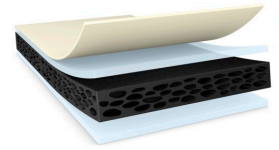




# tesa® 62865

## Product Information



250µm d/s black anti-lifting PE foam tape

## Product Description

tesa® 62865 is a black double-sided tape consisting of a high grade shock resistance PE foam backing equipped with a special acrylic adhesive, which comes with an excellent performance of shock resistance and anti-lifting.

## Product Features

- Superior anti-lens separation performance
- Excellent shear resistance
- Good rework ability and easily clean up residue
- Very good shock performance
- Outstanding anti-lifting performance under high temperature and high humidity

## Application Fields

- Lens mounting and touch panel mounting in consumer electronics devices like smart phone, tablet etc.

## Technical Information (average values)

The values in this section should be considered representative or typical only and should not be used for specification purposes.

## Product Construction

- |                    |                  |                   |        |
|--------------------|------------------|-------------------|--------|
| • Backing          | PE foam          | • Total thickness | 250 µm |
| • Type of adhesive | modified acrylic | • Color           | black  |
| • Type of liner    | PET film         |                   |        |

## Properties/Performance Values

- |                          |           |                                   |      |
|--------------------------|-----------|-----------------------------------|------|
| • Elongation at break    | 220 %     | • Humidity resistance             | good |
| • Tensile strength       | 10.7 N/cm | • Static shear resistance at 23°C | good |
| • Ageing resistance (UV) | good      | • Static shear resistance at 40°C | good |

## Adhesion to Values

- |                             |          |                         |           |
|-----------------------------|----------|-------------------------|-----------|
| • ABS (initial)             | 5 N/cm   | • Glass (after 14 days) | 9 N/cm    |
| • ABS (after 14 days)       | 9.1 N/cm | • PC (initial)          | 4.6 N/cm  |
| • Aluminium (initial)       | 5.5 N/cm | • PC (after 14 days)    | 9.9 N/cm  |
| • Aluminium (after 14 days) | 9.5 N/cm | • Steel (initial)       | 6.3 N/cm  |
| • Glass (initial)           | 6.1 N/cm | • Steel (after 14 days) | 10.1 N/cm |

For latest information on this product please visit <http://l.tesa.com/?ip=62865>



# tesa<sup>®</sup> 62865

## Product Information

### Disclaimer

tesa<sup>®</sup> products prove their impressive quality day in, day out in demanding conditions and are regularly subjected to strict controls. All information and recommendations are provided to the best of our knowledge on the basis of our practical experience. Nevertheless tesa SE can make no warranties, express or implied, including, but not limited to any implied warranty of merchantability or fitness for a particular purpose. Therefore, the user is responsible for determining whether the tesa<sup>®</sup> product is fit for a particular purpose and suitable for the user's method of application. If you are in any doubt, our technical support staff will be glad to support you.



For latest information on this product please visit <http://l.tesa.com/?ip=62865>