



ELECTRICAL SYSTEMS PROTECTION

Tape Solutions for Automotive Electrical Distribution Systems

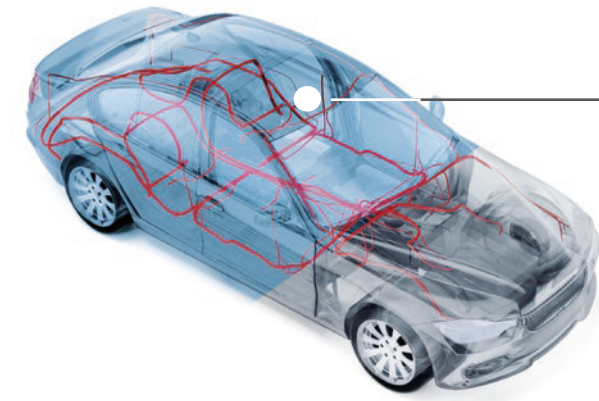


Scan code to visit us on LinkedIn

BEST DECISION

Choosing the Right Product for Your Application

Passenger compartment
Protection against noise and environmental conditions

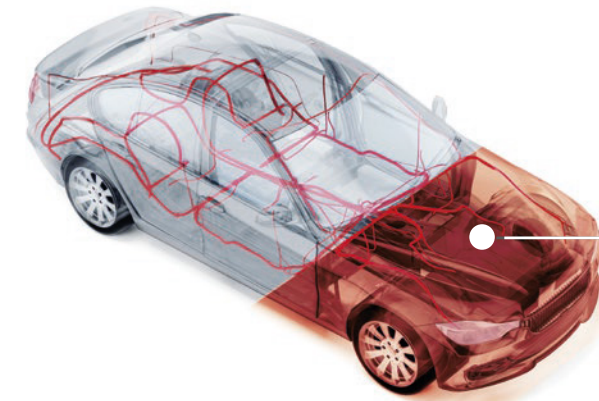


Passenger Compartment
105°C

Thermal Management	Flexibility	Abrasion protection	Noise damping	Hand tearable	Product	Color	Adhesive / Backing	Temperature resistance (°C/3000h)	Abrasion resistance 5mm/10mm mandrel	Noise damping class	Total thickness (µm)
Passenger Compartment 105°C	high	basic	high	yes	51618 PV5	●	Rubber/ PET fleece	105	B/B	D	580
				yes*	51608 PV6	●	Rubber/ PET fleece	105	B/B	D	560
				yes*	51608 PV8/9	●	Rubber/ PET fleece	105	A/A	C	210
		high	very high	51626	●	Acrylic/ PA Velour	105	D/E	E	1000	
				high	51606	●	Rubber/ PET fleece	105	D/D	D	800
			medium	high	51616	●●	Rubber/ PET fleece	105	C/D	D	650
				high	51617	●	Rubber/ PET fleece	105	B/B	D	450
	medium	basic	medium	yes	51608/9	●	Rubber/ PET fleece	105	A/B	C	280
				yes	51618/9	●●	Rubber/ PET fleece	105	A/B	C	250
				yes	51623	●	Rubber/ PET fleece	105	A/A	C	230
				yes	4173	●	Acrylic/ PVC Film	105	A/A	A	126
				yes	4182	●	Acrylic/ PVC Film	105	A/A	A	104

* Perforation upon request ** Kiss-cut upon request ● Black ● Orange ● Black with identifier A = none | B = basic | C = medium | D = high | E = very high

Engine compartment
Protection against abrasion, demanding temperatures and environmental conditions



Engine Compartment
≥ 125°C

Thermal Management	Flexibility	Abrasion protection	Noise damping	Hand tearable	Product	Color	Adhesive / Backing	Temperature resistance (°C/3000h)	Abrasion resistance 5mm/10mm mandrel	Noise damping class	Total thickness (µm)	
Engine Compartment ≥ 125°C	yes	high	medium	yes**	68000 PV1	●	Adv. Acrylic/ Aluminum/ Glass cloth	150	A/A	A	210	
				yes**	68000 PV17	●	Adv. Acrylic/ Aluminum/ Glass cloth	150	A/A	C	450	
	no	high	very high	basic	yes*	51039 PV50	●●	Adv. Acrylic/ Adv. PET cloth	150	E/E	B	530
						51039 PV60	●●	Adv. Acrylic/ Adv. PET cloth	150	E/E	B	530
						51039 PV70	●●	Adv. Acrylic/ Adv. PET cloth	150	E/E	B	490
						51036 PV76	●	Adv. Acrylic/ PET cloth/fleece	150	D/E	D	780
						51036 PV5	●●	Adv. Acrylic/ PET cloth	150	D/E	B	530
						51036 PV6	●●	Adv. Acrylic/ PET cloth	150	D/E	B	530
						51036 PV7	●●	Adv. Acrylic/ PET cloth	150	D/E	B	485
						51022 PV60	●	Acrylic/ PET cloth	150	D/D	B	440
						51036 PV9	●●	Adv. Acrylic/ PET cloth	150	B/C	A	220
						51022 PV90	●	Acrylic/ PET cloth	150	B/C	A	210
						no	medium	very high	very high	yes	69000	●●
	51627	●	Acrylic/ PA velour	125	D/E						E	1000
	51037	●	Adv. Acrylic/ PET cloth	150	D/D						A	230
	51036	●●●●	Acrylic/ PET cloth	150	D/D						A	260
	51035	●●●●	Acrylic/ PET cloth	150	C/D						A	240
	51628	●	Acrylic/ PET fleece	125	A/B						C	270
	51025	●	Rubber/ PET cloth	125	A/B						A	160
	62309	●	Acrylic/ PE film	125	A/A						A	95

* Perforation upon request ** Kiss-cut upon request ● Black ● Orange ● Silver ● Blue ● Violet A = none | B = basic | C = medium | D = high | E = very high

Performance classification according to typical OEM specifications ¹⁾

Temperature	Class					
Class	A/T1	B/T2	C/T3	D or T4	E or T5	F or T6
[°C]	-40 to 85	-40 to 100/105	-40 to 125	-40 to 150	-40 to 175	-40 to 200

Abrasion protection	Class					
Class	A	B	C	D	E	F
# of strokes	< 100	100 - 499	500 - 999	1000 - 4999	5000 - 14999	15000 - 29999
Level of abrasion protection	-	basic	medium	high	very high	extremely high

Noise damping	Class				
Class	A	B	C	D	E
Attenuation db [A]	0 to ≤ 2	> 2 to ≤ 5	> 5 to ≤ 10	> 10 to ≤ 15	> 15
Level of noise cancelling	-	basic	medium	high	very high

¹⁾ tests are based on the SAE 2192 / ISO 6722 norms which reflect the tests required by most OEM Wire Harness specifications

OUR BUILDING BLOCKS

Using state of the art backing materials and our innovative adhesive technologies, we tailor solutions to meet existing and future TIER and OEM requirements. tesa's global production footprint ensures short supply chains and supply safety for our customers around the globe.



Did You Know?

We also offer an assortment for E-Mobility with product features such as:

- color marking for high voltage and 48V lines
- very high abrasion resistance
- sleeve solutions for weight and space saving
- EMI shielding solutions

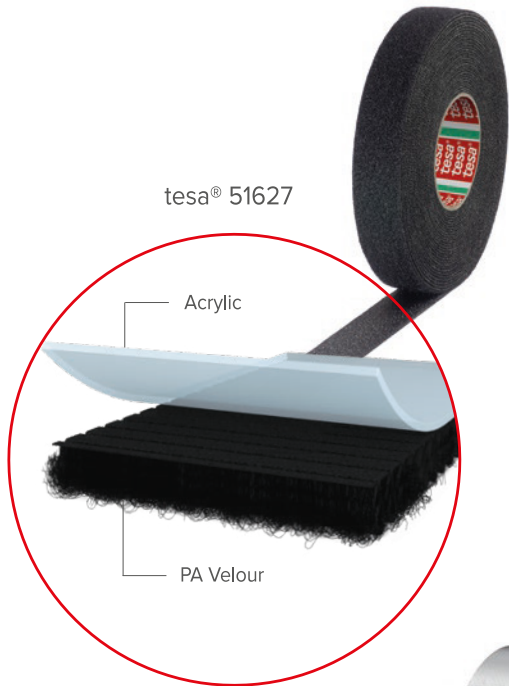


tesa® products prove their impressive quality day in, day out in demanding conditions and are regularly subjected to strict controls. All technical information and data mentioned above are provided to the best of our knowledge on the basis of our practical experience. They shall be considered as average values and are not appropriate for a specification. Therefore tesa SE can make no warranties, express or implied, including, but not limited to any implied warranty of merchantability or fitness for a particular purpose. The user is responsible for determining whether the tesa® product is fit for a particular purpose and suitable for the user's method of application. If you are in any doubt, our technical support staff will be glad to support you.

OUR BUILDING BLOCKS

Using state of the art backing materials and our innovative adhesive technologies, we tailor solutions to meet existing and future TIER and OEM requirements. tesa's global production footprint ensures short supply chains and supply safety for our customers around the globe.

tesa® 51627



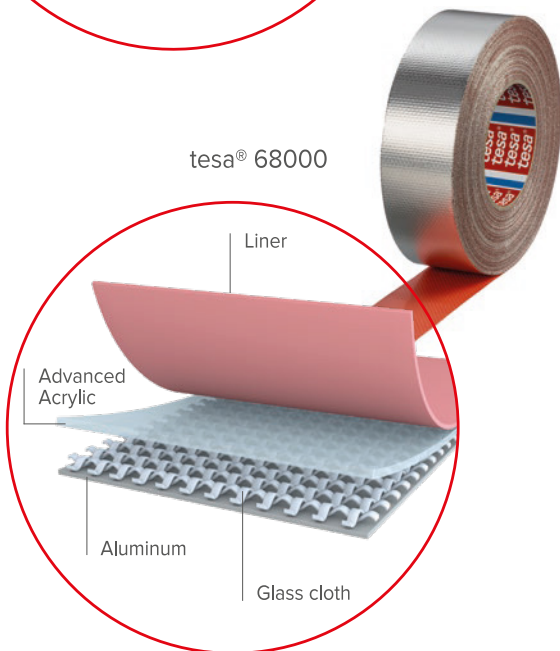
tesa® 51618



tesa® 51036



tesa® 68000



Did You Know?

We also offer an assortment for E-Mobility with product features such as:

- color marking for high voltage and 48V lines
- very high abrasion resistance
- sleeve solutions for weight and space saving
- EMI shielding solutions



tesa® products prove their impressive quality day in, day out in demanding conditions and are regularly subjected to strict controls. All technical information and data mentioned above are provided to the best of our knowledge on the basis of our practical experience. They shall be considered as average values and are not appropriate for a specification. Therefore tesa SE can make no warranties, express or implied, including, but not limited to any implied warranty of merchantability or fitness for a particular purpose. The user is responsible for determining whether the tesa® product is fit for a particular purpose and suitable for the user's method of application. If you are in any doubt, our technical support staff will be glad to support you.

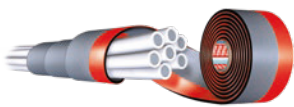
MAXIMUM FLEXIBILITY

Efficient Space Utilisation in Narrow Areas



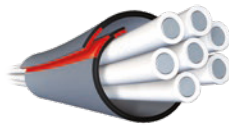
tesa® Sleeve assortment

With our versatile converting capabilities, we are able to provide product solutions also as sleeves. Sleeve solutions are well appreciated in the market as VAVE replacements for other harness coverings such as braided sleeves or convoluted tubes. Our sleeves are minimizing the adhesive contact to the wires to increase flexibility and assembly efficiency. Further benefits are weight and space saving.



tesa® Spiralsleeve PV5X series

- Combines the well-known spiral application of tapes with the flexibility of sleeves
- Adhesive-to-adhesive closure guarantees secure bonding



tesa Supersleeve® PV6X series

- High noise damping and/or abrasion resistance due to double-layer product design
- Adhesive-to-adhesive closure guarantees secure bonding



tesa Supersleeve® PV7X series

- High abrasion resistance due to double-layer product design
- Also suitable for small-diameter harness branches



tesa® Sleeve PV8X series

- Superior flexibility
- No adhesive contact to wires
- Adhesive-to-adhesive closure guarantees secure bonding



tesa® Sleeve PV9X series

- Superior flexibility
- Cost-efficient sleeve version due to single-layer product design



Scan code to get access to the application videos of our sleeve assortment.



Our management system is certified according to the standards ISO 9001, IATF 16949, and ISO 14001. All our products delivered to automotive customers are listed in the International Material Data System (IMDS).

tesa® Brasil

Av. João Gualberto, 1259 – 18º andar
CEP: 80030-001 – Curitiba/PR
Tel: +55 41 3021 8100
E-mail: contato@tesa.com
Web Site: tesatape.com.br

tesa tape Argentina S.R.L.

Arias 1639 Piso 21 esq. Av. Libertador
(C1429BMP)
Ciudad Autonoma de Buenos Aires
Argentina
Telephone +54 11 5246 2600
E-mail: clientes.ar@tesa.com
Web Site: www.tesatape.com.ar