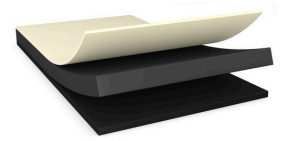




# tesa<sup>®</sup> 7250

## Product Information



50µm single sided solid black filmic tape

## Product Description

tesa<sup>®</sup> 7250 is a deep black, single sided self-adhesive tape consisting of a black PET film backing and a black tackified acrylic adhesive.

## Product Features

- Thickness: 50µm
- Very good light blocking performance
- High peel strength and shear resistance
- Very good repulsion resistance properties
- Very good handling performance in converting processes
- Excellent resistance to demanding environmental conditions
- Very good removability on common plastic and metal substrates
- Pin whole free product design

## Application Fields

- Fixing of cables or constructive parts in LED light sources or Flat Panel displays
- Light shielding in consumer electronics parts
- Electrical insulation

## Technical Information (average values)

The values in this section should be considered representative or typical only and should not be used for specification purposes.

## Product Construction

- Backing PET
- Type of adhesive tackified acrylic

## Properties/Performance Values

- |                                |           |                                     |           |
|--------------------------------|-----------|-------------------------------------|-----------|
| • Elongation at break          | 50 %      | • Softener resistance               | very good |
| • Tensile strength             | 30 N/cm   | • Static shear resistance at 23°C   | very good |
| • Ageing resistance (UV)       | very good | • Static shear resistance at 40°C   | very good |
| • Dielectric breakdown voltage | 4000 V    | • Temperature resistance long term  | 100 °C    |
| • Humidity resistance          | good      | • Temperature resistance short term | 200 °C    |
| • Optical density              | 3.7       |                                     |           |



# tesa<sup>®</sup> 7250

## Product Information

### Adhesion to Values

• ABS (initial)	3.9 N/cm	• Glass (after 14 days)	4.9 N/cm
• ABS (after 14 days)	4.7 N/cm	• PC (initial)	3.9 N/cm
• Aluminium (initial)	3.8 N/cm	• PC (after 14 days)	5.2 N/cm
• Aluminium (after 14 days)	5.3 N/cm	• Steel (initial)	4.2 N/cm
• Glass (initial)	4.3 N/cm	• Steel (after 14 days)	5.3 N/cm

### Disclaimer

tesa<sup>®</sup> products prove their impressive quality day in, day out in demanding conditions and are regularly subjected to strict controls. All information and recommendations are provided to the best of our knowledge on the basis of our practical experience. Nevertheless tesa SE can make no warranties, express or implied, including, but not limited to any implied warranty of merchantability or fitness for a particular purpose. Therefore, the user is responsible for determining whether the tesa<sup>®</sup> product is fit for a particular purpose and suitable for the user's method of application. If you are in any doubt, our technical support staff will be glad to support you.



For latest information on this product please visit <http://l.tesa.com/?ip=07250>