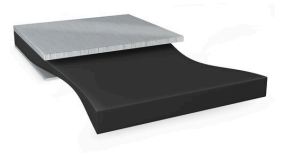




tesa[®] 76565 Bond & Detach



Product Information

500 µm stretch release tape

Product Description

Double sided specialty adhesive tape for reliable bonding of components over the lifetime of a car with the additional feature to release the bond whenever needed, leaving no residues behind.

Our Bond & Detach[®] solutions offer the possibility to rework high value components during the production process enhancing process efficiency by decreasing reworking time, effort, and scrap cost. Furthermore, tesa Bond & Detach[®] 76565 enables the separation of bonds during or after the lifetime of a vehicle allowing for repairing, reuse or recycle of components.

The stretch-release mechanism used to debond our Bond & Detach[®] needs no additional heat, cold or liquids that would endanger surrounding materials and leaves clean and residue-free substrates. This enables an easy reuse of the bonded high value components.

Its high temperature-, humidity- and UV-resistance allows for the usage in various automotive applications such as display mounting, bonds in ADAS components and EV systems. The deep black color eliminates issues with light leakage and allows for decent appearance in flexible designs as well as automated application.

Product Features

- High initial bonding strength
- High temperature, humidity and UV resistance
- Easy and reliable removability even after long bonding time
- Light blocking
- PFAS free

Application Fields

Target markets for tesa Bond & Detach[®] 76565 are automotive Display mounting, E-mobility and ADAS systems. Generally, it is especially recommended for the bonding of high value components.

E-mobility: Our stretch release mechanism is suitable for battery pack sealing, cell- as well as module-mounting.

Connected Interior: Focus applications in the automotive interior are display frame mounting, retainer mounting and FPC/PCB mounting.



tesa[®] 76565

Bond & Detach

Product Information

Technical Information (average values)

The values in this section should be considered representative or typical only and should not be used for specification purposes.

Product Construction

| | | | |
|--------------------|------------------|----------------------|----------------------|
| • Backing | none | • Color | deep black |
| • Type of adhesive | synthetic rubber | • Color of liner | transparent |
| • Type of liner | siliconised PET | • Thickness of liner | 75 µm |
| • Total thickness | 0.5 mm | • Weight of liner | 110 g/m ² |

Additional Information

For our comprehensive technical information sheet please visit our website

<https://www.tesa.com/en-sg/industry/automotive/technology-trends/bond-and-detach-automotive.html>

Disclaimer

tesa[®] products prove their impressive quality day in, day out in demanding conditions and are regularly subjected to strict controls. All information and recommendations are provided to the best of our knowledge on the basis of our practical experience. Nevertheless tesa SE can make no warranties, express or implied, including, but not limited to any implied warranty of merchantability or fitness for a particular purpose. Therefore, the user is responsible for determining whether the tesa[®] product is fit for a particular purpose and suitable for the user's method of application. If you are in any doubt, our technical support staff will be glad to support you.



For latest information on this product please visit <http://l.tesa.com/?ip=76565>