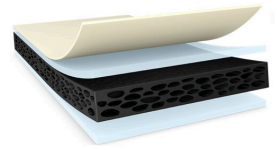




# tesa® 64912

## Product Information



### Double-sided PE foam tape

#### Product Description

Primer process is annoying but essential for many suppliers in the Automotive Industries nowadays!  
The introduction of tesa® 64912 can help our customers eliminate the primer in the process\*!

tesa® 64912 is a double-sided PE-foam tape. Its high performance adhesive enables primerless bonding of Low Surface Energy (LSE) and Medium Surface Energy (MSE) substrates.

#### Features:

- High initial performance to LSE and MSE surfaces without primer
- Reach ultimate peel adhesion level right after application
- Superior peel adhesion on PP substrates, even at an application temperature down to 5 °C
- Reliable performance at higher temperature
- Highly conformable and gap filling
- Excellent converting properties

#### Benefits:

- Eliminate the primer in the production process
- Enable a much more efficient and robust application
- Skip the pre-heating of tape in winter time
- Realise a healthier working condition
- Reach a more environmental friendly production

(\*) For glass and soft EPDM substrates primer is still needed.

#### Product Features

- High initial adhesion to LSE and MSE surfaces without primer
- Near to ultimate peel adhesion level right after application
- Good performance at an application temperature as low as 5°C
- Conformable foam backing to compensate design tolerances or uneven surfaces
- Reliable performance at higher temperatures
- Excellent converting properties

#### Application Fields

Developed for permanent mounting of similar and / or dissimilar plastic parts, tesa® 64912 can be widely used for mounting applications of smaller parts. Such as permanent mounting of

- park distance sensor bracket
- entry trim
- interior decorative trim

For latest information on this product please visit <http://l.tesa.com/?ip=64912>



# tesa® 64912

## Product Information

### Technical Information (average values)

The values in this section should be considered representative or typical only and should not be used for specification purposes.

### Product Construction

• Backing material	PE foam	• Colour	black
• Type of adhesive	specialty	• Colour of liner	brown
• Type of liner	glassine	• Thickness of liner	69 µm
• Total thickness	1.2 mm		

### Properties/Performance Values

• Elongation at break	400 %	• Tensile strength	13 N/cm
-----------------------	-------	--------------------	---------

### Adhesion to Values

• PP (initial)	20 N/cm	• Steel (initial)	20 N/cm
• PP (after 14 days)	20 N/cm	• Steel (after 14 days)	20 N/cm

### Additional Information

Liner variants:

PV0 brown glassine (69 µm)

Peel Adhesion:

- initial and after 14 days: foam splitting on Steel and PP

### Disclaimer

tesa® products prove their impressive quality day in, day out in demanding conditions and are regularly subjected to strict controls. All information and recommendations are provided to the best of our knowledge on the basis of our practical experience. Nevertheless tesa SE can make no warranties, express or implied, including, but not limited to any implied warranty of merchantability or fitness for a particular purpose. Therefore, the user is responsible for determining whether the tesa® product is fit for a particular purpose and suitable for the user's method of application. If you are in any doubt, our technical support staff will be glad to support you.



For latest information on this product please visit <http://l.tesa.com/?ip=64912>