



# RELIABLE, TOUGH, AND RESISTANT

Our Assortment of Sandblasting Tapes





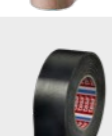

# SANDBLASTING TAPES

## High-Impact-Resistant Masking Solutions

Surface treatment using abrasive materials is applied to the substrate via air pressure. This technique is used to remove coatings or impurities and also for surface modification (e.g. improving the durability of metal surfaces). Selection of an appropriate product that absorbs the impact of the abrasives depends on the aggressiveness of the blasting material, air pressure, and duration of the process. This brochure will help you to select the product best suited to your individual needs.

### By using our products, you will benefit from:

- A wide range to serve even the most demanding applications
- Stable and reliable quality that has been proven multiple times
- Technical customer service by experienced and highly skilled engineers

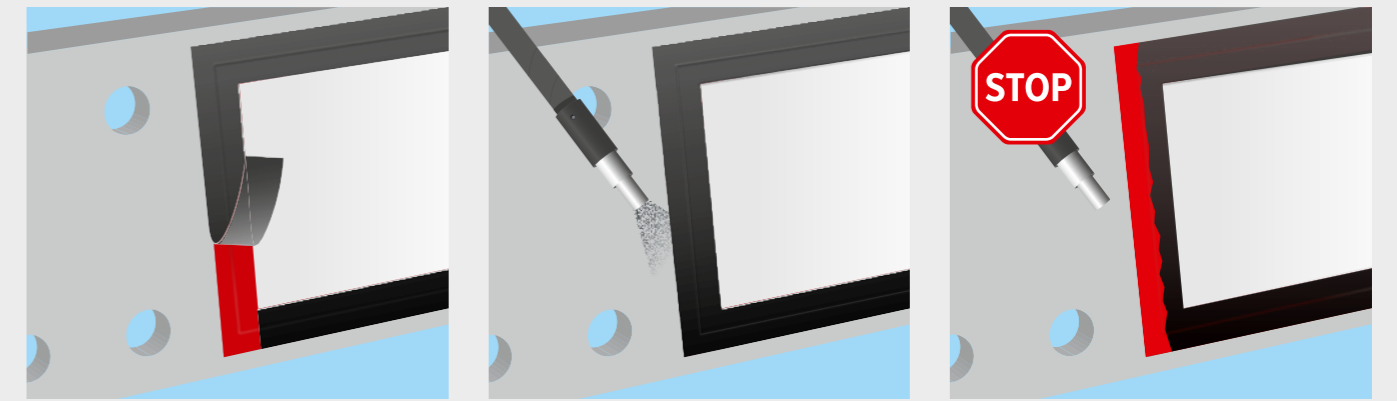
| Product description and application   | Tape  | Backing              | Adhesion to steel [N/cm] | Total thickness [μm] | Tensile strength [N/cm] | Durability [sec./4 bar] | Temperature resistance* [°C/1 h] | Color |
|---|---|----------------------|--------------------------|----------------------|-------------------------|-------------------------|----------------------------------|-------|
|   |   | Adhesive             |                          |                      |                         |                         |                                  |       |
| <b>tesa® 4423</b><br>• Good conformability<br>• Hand-tearable<br>• Suitable as stencil material<br>• Good adhesion to various surfaces, clean removal   |   | Flat paper           | 4.5                      | 145                  | 57                      | < 6                     | 60                               | ●     |
|   |   | Natural rubber       |                          |                      |                         |                         |                                  |       |
| <b>tesa® 4688</b><br>• Very good conformability<br>• Good hand-tearability in MD/CD**<br>• Tough and resistant cloth backing<br>• Good adhesion to various surfaces, clean removal  |  | PE-extruded cloth    | 4.5                      | 260                  | 52                      | < 6                     | 60 [30 min.]                     | ●●●●  |
|   |   | Natural rubber       |                          |                      |                         |                         |                                  |       |
| <b>tesa® 4432</b><br>• Tough and resistant paper backing<br>• Easy to cut by hand<br>• Suitable as stencil material<br>• Good adhesion to various surfaces, clean removal   |  | Flat paper           | 8.0                      | 330                  | 93                      | 6                       | 100                              | ●     |
|   |   | Natural rubber       |                          |                      |                         |                         |                                  |       |
| <b>tesa® 4443</b><br>• Tough and resistant paper backing<br>• Product with liner for easy processing, on e.g., flatbed and roll plotters without sprocked feed<br>• Good adhesion to various surfaces, clean removal  |  | Flat paper           | 4.5                      | 330                  | 93                      | 6                       | 100                              | ●     |
|   |   | Natural rubber       |                          |                      |                         |                         |                                  |       |
| <b>tesa® 4657</b><br>• Very good conformability<br>• Excellent hand-tearability in MD/CD**<br>• Very tough and resistant cloth backing<br>• Thermosetting natural rubber adhesive for high temperatures<br>• Good adhesion to various surfaces, clean removal |  | Acrylic-coated cloth | 4.6                      | 290                  | 100                     | 6                       | 140                              | ●●    |
|   |   | Natural rubber       |                          |                      |                         |                         |                                  |       |
| <b>tesa® 4434</b><br>• Very tough and resistant paper backing<br>• Easy to cut by hand<br>• Suitable as stencil material<br>• Also used as protection material during grinding and general metalwork<br>• Good adhesion to various surfaces, clean removal    |  | Flat paper           | 2.7                      | 670                  | 180                     | 50                      | 100                              | ●     |
|   |   | Natural rubber       |                          |                      |                         |                         |                                  |       |

Increasing durability ↓

\* Test method for evaluating temperature resistance for masking tapes \*\* Machine and cross direction

## Sandblasting Tapes in Multiple Layers

When using tesa® 4688 in multiple layers, a red-colored initial tape layer can be used to signal when the blasting process should be stopped.



1. Apply first a red and then above a black-colored tape
2. Start blasting
3. Stop when you see red

For very demanding applications our sandblasting tapes are used in multiple layers. This table helps you to compare the individual tapes, showing you exactly what product should be used if the current solution is not sufficient. Applying fewer layers saves time and material, making your process more efficient.

| Process parameter:<br>4 bar/2.5 cm distance | tesa® 4423 | tesa® 4688 | tesa® 4432 | tesa® 4443 | tesa® 4657 | tesa® 4434 |
|---|------------|------------|------------|------------|------------|------------|
| 1 tape layer                                | ●          | ●          | ●          | ●          | ●          | ●●         |
| 2 tape layers                               | ●          | ●          | ●●         | ●●         | ●●         | ●●●        |
| 3 tape layers                               | ●          | ●●         | ●●●        | ●●●        | ●●●        | ●●●●       |

Increasing durability →

Durability: ● Low ●● Medium ●●● Good ●●●● Very good

tesa® products prove their impressive quality day in, day out in demanding conditions and are regularly subjected to strict controls. All technical information and data above mentioned are provided to the best of our knowledge on the basis of our practical experience. They shall be considered as average values and are not appropriate for a specification. Therefore tesa SE can make no warranties, express or implied, including, but not limited to any implied warranty of merchantability or fitness for a particular purpose. The user is responsible for determining whether the tesa® product is fit for a particular purpose and suitable for the user's method of application. If you are in any doubt, our technical support staff will be glad to support you.



05/2019



Our management system is certified according to the standards ISO 9001, IATF 16949, and ISO 14001.