



Contributing to  
sustainability – Our  
packaging tape assortment



For a more sustainable future

# We help your business to be more sustainable

## Outstanding quality for crucial applications

Whether for a light or heavy carton, traveling a short distance by rail, or taking a long journey by ship – our range of packaging tapes meets all the requirements of modern logistics. They facilitate a fast packaging process, protect the shipment, and reinforce the carton closure. But that is not all: as one of the market leaders for packaging tapes, we are well aware of the big contribution that we can make to the environment when developing new products. And this is reflected in our new range of packaging tapes with sustainable aspects.

## tesa – Your packaging tape partner

Secure packaging is the primary requirement to ensure a product reaches its destination intact. It provides protection from a variety of factors en route to the recipient. However, it is not only the cardboard box that is of significance – a huge range of other requirements are also placed on the adhesive tapes holding the box together.

tesa® packaging tapes are the result of decades of experience in the secure sealing of cartons. They have proven their worth millions of times over as a safe solution, under a huge range of different conditions, for the transportation of goods.

## Why tapes will be vital in the future

The debate around packaging pollution has grown significantly in recent years. Increasing concern from regulatory bodies and from the public are currently leading to major changes – in both industrial and consumer packaging. Packaging tapes are also being discussed as a crucial part of the packaging solution, with calls for innovative solutions that better protect our environment growing louder.

of packaging tapes that will support our customers in meeting their sustainability goals.

The following pages provide a detailed overview of the current assortment of packaging tapes with sustainable aspects and will help you find the right tape for your specific requirement.

We are not only focusing on becoming a more sustainable company but want to support our customers to become more sustainable as well. To do so, we have developed a set





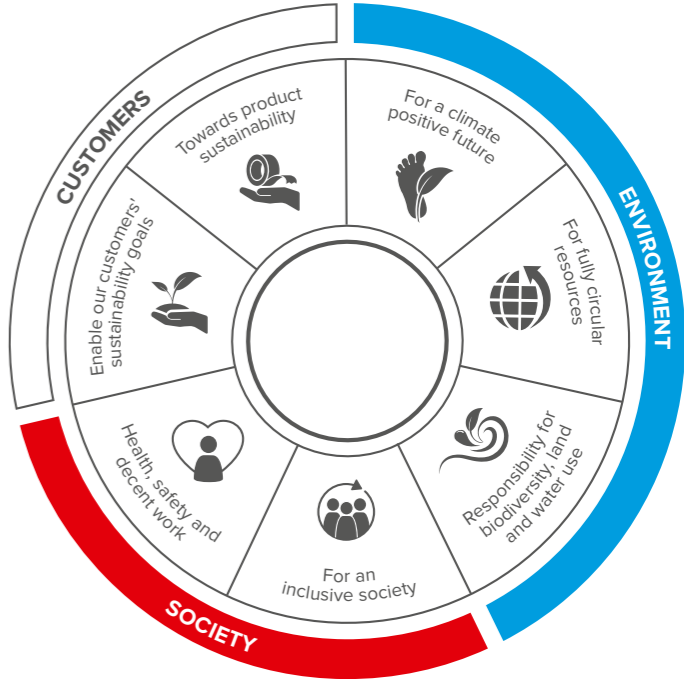
# Sustainability Agenda

## A compass for positive change

As a company, we are embedded in society and the environment.

There is no healthy economy without a healthy society and no healthy society without a healthy environment. We therefore take responsibility for our actions along our entire value chain and consider the entire product life cycle to reduce our footprint.

Based on this understanding, we have derived our Sustainability Agenda, which reflects our holistic view. It creates clarity and steers our efforts and investments in the most meaningful directions.



## Our five strategic action areas with high impact

To meet our commitments, we have defined a set of goals and indicators aligned with our Sustainability Agenda. This also applies to packaging tapes.

- 01**

Reduction of emissions
- 02**

Responsible sourcing
- 03**

Use of recycled and bio-based materials
- 04**

Circularity and reduction of waste
- 05**

Enable sustainability at our customers and consumers



**Want to know more?**

To learn more about our Sustainability Agenda, visit our website:  
[www.tesa.com/en/about-tesa/sustainability](http://www.tesa.com/en/about-tesa/sustainability)

# Paper packaging tapes – Our safe bets

## tesa® 4713

### Standard paper packaging tape

- For light weight cartons up to 10kg
- Good adhesion on many cardboard qualities
- Adhesive is appropriate for use at lower temperatures
- Suitable for manual and automatic dispensers
- Available in white and brown color
- Printable

#### Sustainable aspects

- Paper backing made with paper from well-managed FSC™-certified forests and other controlled sources
- Recycling-friendly according to INGEDE Method 12 (100/100)
- Solvent-free production process



## tesa® 4513

### Superior paper packaging tape

- For light to medium weight cartons up to 15kg
- Good adhesion performance even on difficult carton quality
- Robust Kraft paper backing
- Suitable for manual and automatic applications
- Printable

#### Sustainable aspects

- Paper backing made with paper from well-managed FSC™-certified forests and other controlled sources
- Recycling-friendly according to INGEDE Method 12 (100/100)
- Solvent-free production process



## tesa® 4313 PV12

### Premium paper packaging tape

- For medium weight cartons up to 20kg
- Excellent tack and very good adhesion performance
- High shock resistance due to micro-creped backing
- Suitable for manual and automatic dispensers
- Very good printability

#### Sustainable aspects

- Paper backing made with paper from well-managed FSC™-certified forests and other controlled sources
- Recycling-friendly according to INGEDE Method 12 (83/100)
- Solvent-free production process



	tesa® 4713	tesa® 4513	tesa® 4313 PV12
Backing material	FSC™-certified paper	FSC™-certified paper	FSC™-certified paper
Total thickness [µm]	125	105	125
Backing thickness [µm]	94	80	95
Type of adhesive	Natural rubber	Synthetic rubber	Synthetic rubber
Adhesion to steel [N/cm]	2.8	8.5	9.5
Tensile strength [N/cm]	30	70	60
Elongation at break	10%	3%	6%
Color	<input type="radio"/> <input checked="" type="radio"/>	<input checked="" type="radio"/>	<input type="radio"/> <input checked="" type="radio"/>



Usage of bio-based content in backing



Manual and automatic application



Good hand tearability



Good printability for customization

# Paper packaging tapes - Our master tapes

## tesa® 60408

### Bio-based paper packaging tape

- For medium weight cartons up to 20kg
- Good tack and very good adhesion performance
- Micro-creped paper offers a very good shock resistance
- Suitable for application in lower temperatures
- Best choice when it comes to automated application
- Very good printability

#### Sustainable aspects

- 92% bio-based carbon content in total product
- Paper backing made with paper from well-managed FSC™-certified forests and other controlled sources
- Official certification from DIN CERTCO
- Recycling-friendly according to INGEDE Method 12 (78/100)
- Solvent-free production process



## tesa® 60013

### Self-adhesive reinforced paper tape



- Best choice for heavy duty applications up to 25kg
- Very high tack and good adhesion performance
- High tensile strength, due to fiberglass scrim reinforcement
- Tamper-evident seal when removing the tape
- Suitable for manual and automatic dispensers

#### Sustainable aspects

- Recycling-friendly according to INGEDE Method 12 (75/100)
- Solvent-free production process
- Paper backing made with paper from well-managed FSC™-certified forests and other controlled sources



Carton weight	Technical conditions (transport and storage)	Recommendation	Specialties
Very light (max. 10 kg)	Standard 0–35°C	tesa® 4713 Standard paper packaging tape	
Light (max. 15 kg)	Standard 0–35°C	tesa® 4513 Superior paper packaging tape	
Medium (max. 20 kg)	Standard 0–35°C	tesa® 60408 Bio-based paper packaging tape	tesa® 4313 PV12 Premium paper packaging tape
Heavy (max. 25 kg)	Standard 0–35°C	tesa® 60013 Reinforced paper tape	

	tesa® 60408	tesa® 60013
Backing material	FSC™-certified paper	FSC™-certified reinforced paper
Total thickness [µm]	125	210
Backing thickness [µm]	100	185
Type of adhesive	Natural rubber	Synthetic rubber
Adhesion to steel [N/cm]	2.8	>11
Tensile strength [N/cm]	60	125
Elongation at break	8%	6%
Color		



# Filmic packaging tapes

## tesa® 60400

### Bio & Strong

- For medium weight cartons up to 25kg
- Backing with good shock absorbing properties
- High initial adhesion even on difficult carton surfaces
- Adhesive is appropriate for use at lower temperatures
- Easy application with low unwinding force

#### Sustainable aspects

- 98% bio-based carbon content in total product
- Official certification from DIN CERTCO and TÜV AUSTRIA
- Solvent-free production process



## tesa® 60412

### Thick recycled PET packaging tape

- For medium weight cartons up to 30kg
- Very strong backing from Post-Consumer Recycled PET
- Good adhesion performance even at higher temperatures
- Smooth, silent unwinding
- Very good printability

#### Sustainable aspects

- 70% Post-Consumer Recycled (PCR) PET content in backing
- Recycling-friendly according to INGEDE Method 12 (100/100)
- Solvent-free production process



## tesa® 60418

### Thin recycled PET packaging tape

- For medium weight cartons up to 25 kg
- High initial adhesion even on difficult carton surfaces
- Easy application with low unwinding force
- Higher roll length, less roll changes
- Best choice for automated volume applications

#### Sustainable aspects

- 85% Post-Consumer Recycled (PCR) PET content in backing
- Solvent-free production process



## tesa® 60400

## tesa® 60412

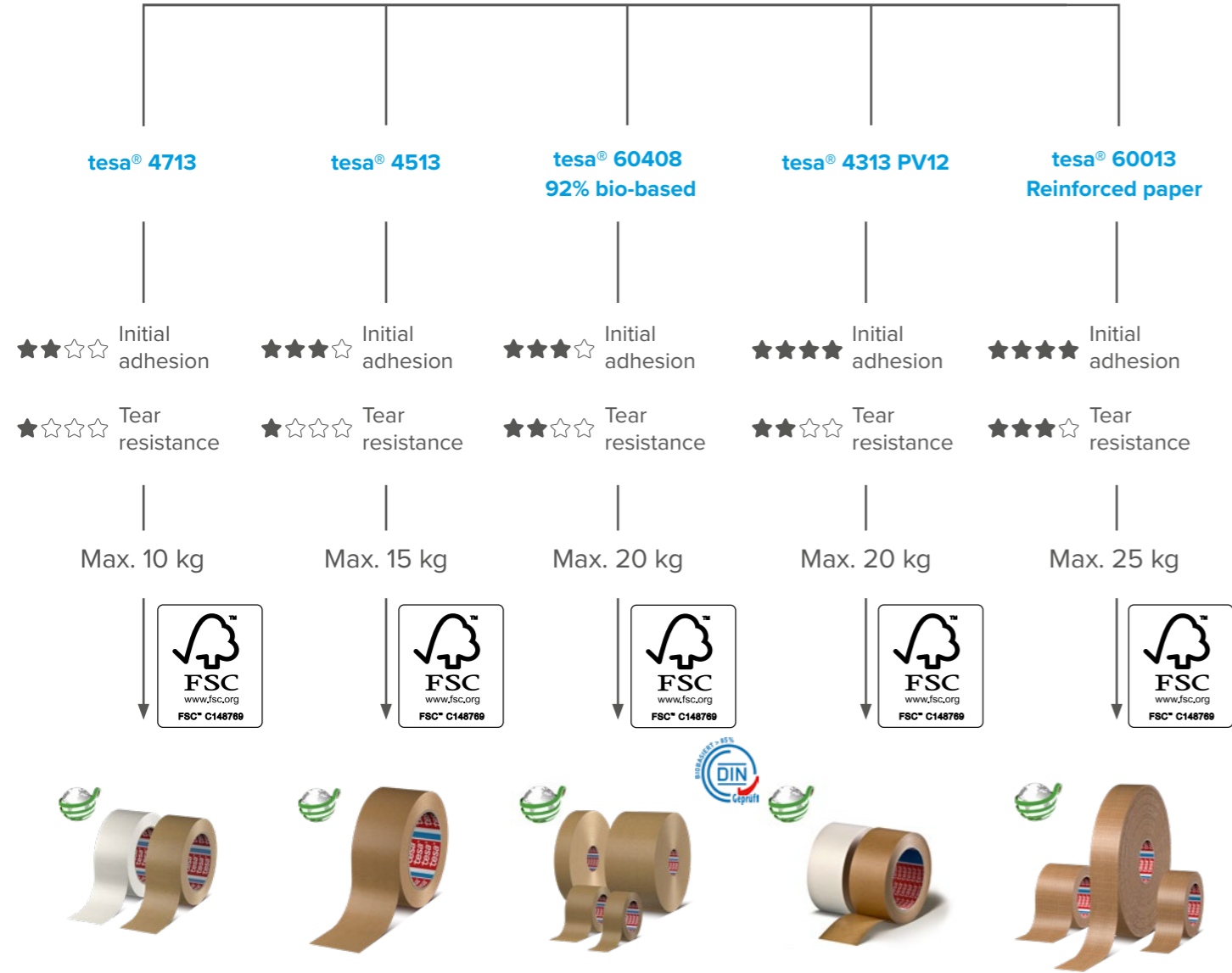
## tesa® 60418

	tesa® 60400	tesa® 60412	tesa® 60418
Backing material	Poly lactide (PLA)	PCR PET (70%)	PCR PET (85%)
Total thickness [µm]	55	56	36
Backing thickness [µm]	30	36	19
Type of adhesive	Natural rubber	Waterborne acrylic	Synthetic rubber
Adhesion to steel [N/cm]	3.5	3.0	6.0
Tensile strength [N/cm]	30	60	38
Elongation at break	185%	130%	120%
Color	⊗	⊗ ○ ●	⊗ ○ ●

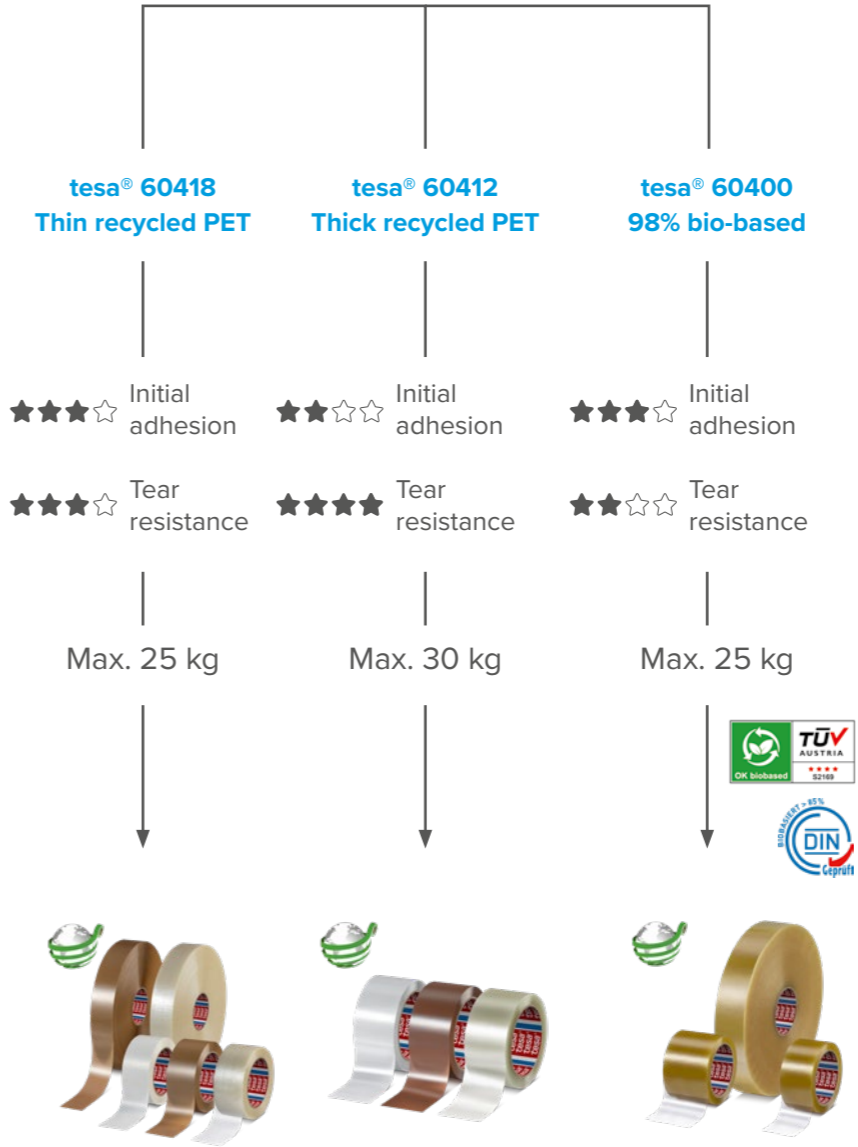


# Overview on packaging tapes contributing to sustainability

## Paper packaging tapes



## Filmic packaging tapes



**Can't find the right solution?**

If you have not found the right product, please contact us. Together we will find a suitable solution for you. **To learn more about our packaging tapes, visit our website:** [www.tesa.com/en/industry/general-applications/packaging](http://www.tesa.com/en/industry/general-applications/packaging)

tesa® products prove their impressive quality day in, day out in demanding conditions and are regularly subjected to strict controls. All technical information and data stated above are provided to the best of our knowledge on the basis of our practical experience. They shall be considered as average values and are not appropriate for a specification. Therefore tesa SE can make no warranties, express or implied, including, but not limited to any implied warranty of merchantability or fitness for a particular purpose. The user is responsible for determining whether the tesa® product is fit for a particular purpose and suitable for the user's method of application. If you are in any doubt, our technical support staff will be glad to support you.



## Certifications

Our company is focused on international quality, environmental, and occupational safety standards.

Please find more information regarding our certifications at:  
[www.tesa.com/certifications](http://www.tesa.com/certifications)



tesa SE  
Phone: +49 40 88899 0  
[tesa.com/company/locations](http://tesa.com/company/locations)

[tesa.com](http://tesa.com)