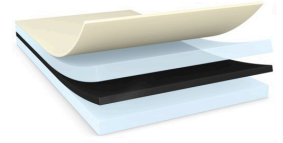




tesa® 68822

Product Information



50µm double sided high bond solid black film tape

Product Description

tesa® 68822 is a double-sided self-adhesive tape consisting of a solid black PET film backing and a tackified acrylic adhesive.

<span style="color: rgb(26, 32, 40)

Product Features

- Excellent light blocking properties
- Excellent resistance to demanding environmental conditions
- Easy handling performance in converting processes
- Superior push-out resistance
- Very good bonding strength
- Thickness: 50µm

Application Fields

- LCD panel mounting on backlight unit of display module
- LED light bar fixing
- Light shielding and light blocking of key components

Technical Information (average values)

The values in this section should be considered representative or typical only and should not be used for specification purposes.

Product Construction

- | | | | |
|--------------------|-------------------|--------------------------------|-------|
| • Backing | PET film | • Thickness of liner - inside | 36 µm |
| • Type of adhesive | tackified acrylic | • Thickness of liner - outside | 36 µm |
| • Total thickness | 50 µm | • Type of liner - inside | PET |
| • Color | black | • Type of liner - outside | PET |
| • Color of liner | transparent | | |

For latest information on this product please visit <http://l.tesa.com/?ip=68822>



tesa[®] 68822

Product Information

Properties/Performance Values

- | | | | |
|--------------------------|-----------|-----------------------------------|-----------|
| • Elongation at break | 60 % | • Static shear resistance at 40°C | very good |
| • Tensile strength | 12 N/cm | • Tack | low |
| • Ageing resistance (UV) | very good | • Transmittance (380 - 780nm) < | 0.01 % |
| • Humidity resistance | very good | | |

Adhesion to Values

- | | | | |
|-----------------------|----------|-------------------------|----------|
| • ABS (initial) | 6 N/cm | • Glass (after 14 days) | 7.6 N/cm |
| • ABS (after 14 days) | 7.3 N/cm | • Steel (initial) | 7.1 N/cm |
| • Glass (initial) | 7.3 N/cm | • Steel (after 14 days) | 10 N/cm |

Disclaimer

tesa[®] products prove their impressive quality day in, day out in demanding conditions and are regularly subjected to strict controls. All information and recommendations are provided to the best of our knowledge on the basis of our practical experience. Nevertheless tesa SE can make no warranties, express or implied, including, but not limited to any implied warranty of merchantability or fitness for a particular purpose. Therefore, the user is responsible for determining whether the tesa[®] product is fit for a particular purpose and suitable for the user's method of application. If you are in any doubt, our technical support staff will be glad to support you.



For latest information on this product please visit <http://l.tesa.com/?ip=68822>