



tesa[®] plate mounting and process tapes

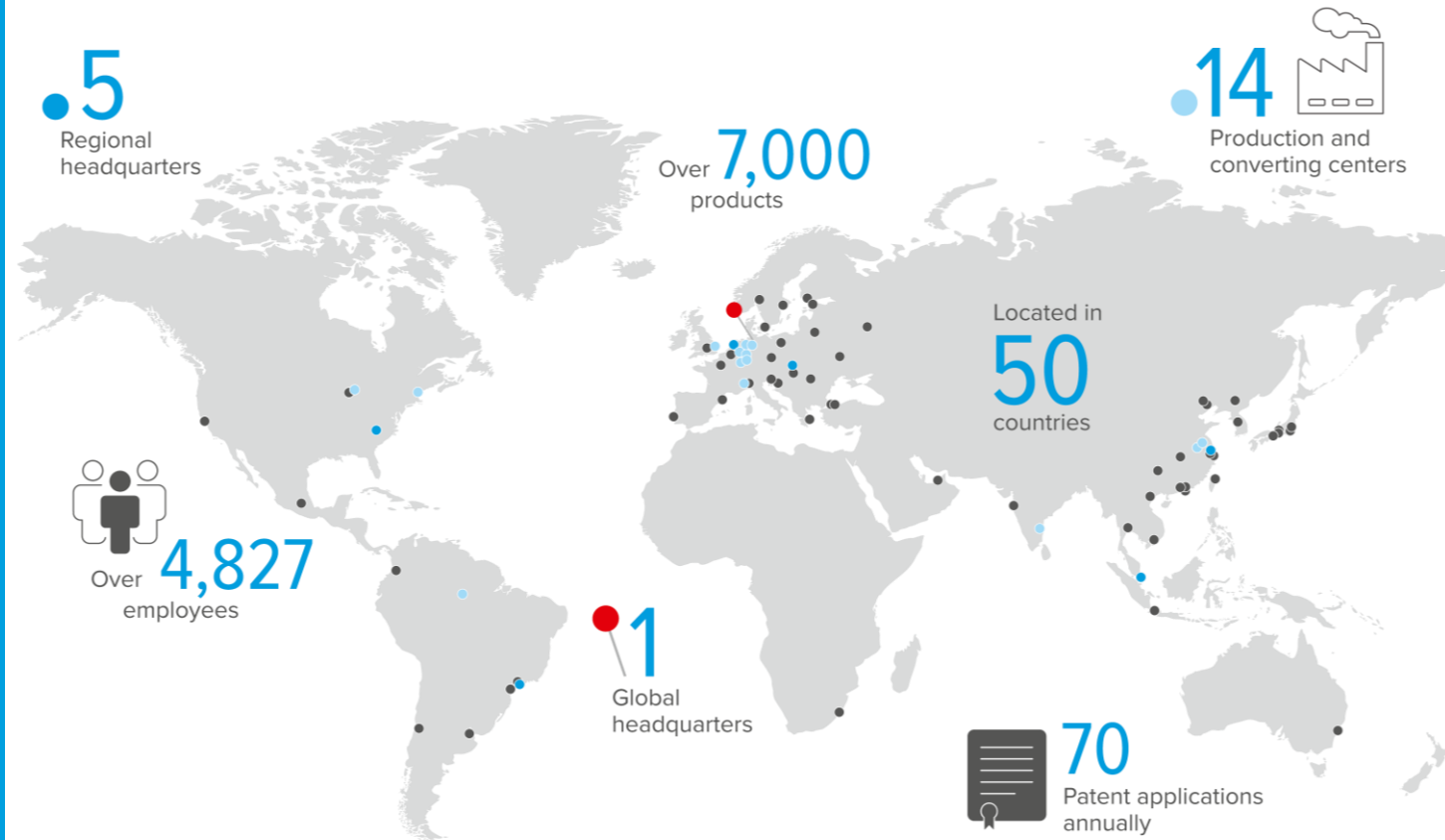
For label printing in Global Converter Markets

By your side

A global partner providing local support

tesa's story began in 1890 and today is one of the world's leading manufacturers of technical adhesive tapes and self-adhesive system solutions with an assortment of more than 7,000 products. Our solutions also prove their performance in countless sectors around the globe thanks to a capillary network composed of thousands of distribution and converting partners.

Industrial applications – in sectors such as the automotive and transportation industries, electronics, printing and paper, building supplies, healthcare, and renewable energy – account for the great majority of the tesa Group's sales. This allowed us to build a solid expertise and market intimacy that we channel in our continuous product developments.



Our sustainability agenda



As a company, we are embedded in society and the environment. There is no healthy economy without a healthy society – no healthy society without a healthy environment.

We therefore take responsibility along our entire value chain and consider the entire life cycle to reduce our footprint.

Based on this understanding, we have derived our sustainability agenda, which reflects our holistic view.

The agenda creates clarity and steers our efforts and investments in the most meaningful directions.

Customers

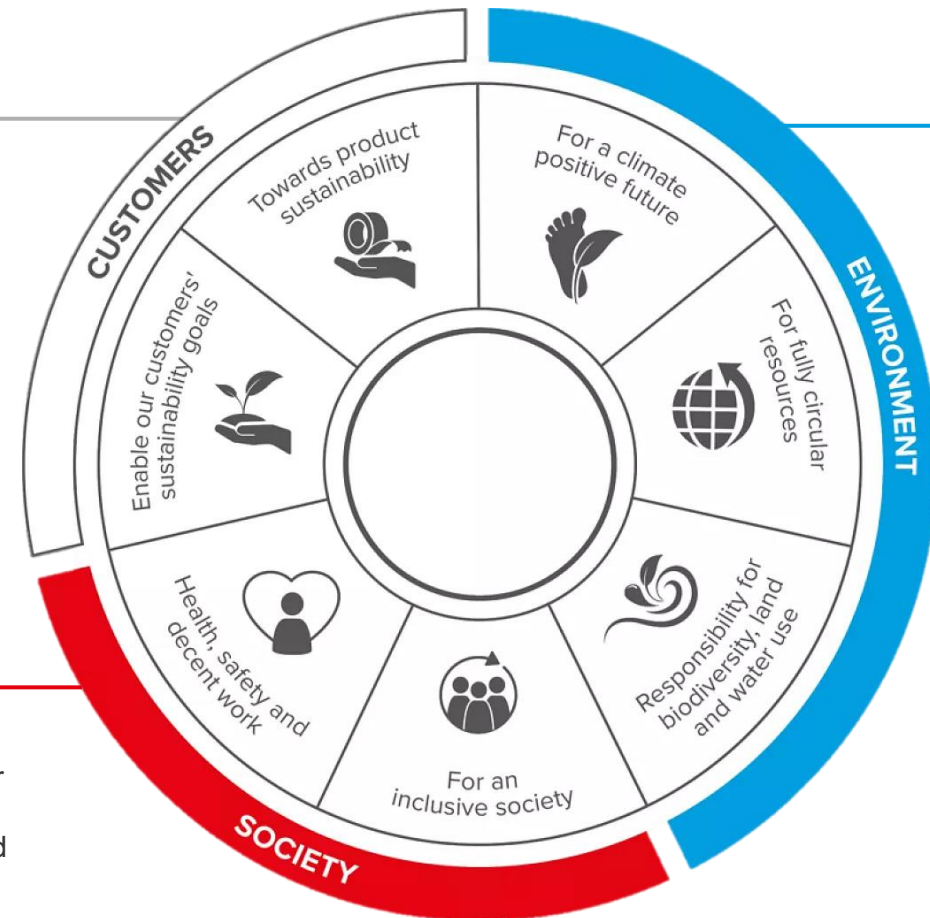
Expanding the range of sustainable products and enabling customers to meet their sustainability goals.

Society

Ensuring good working conditions for employees along our entire value chain and empowering the next generation of innovators.

Environment

Contributing to climate protection and circular economy by reducing our environmental footprint along the product life cycle.



Product excellence and market intimacy across industries

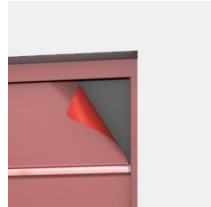


By partnering with tesa as a Converter Partner, you have decided to join our network of strategic business allies. Your company is recognized as a strong and proficient resource and working together we believe we can mutually grow our businesses.

As a Converter Partner, your company has access to the consistent high quality of the extended tesa® assortment as well as to the expertise and support of our sales, supply chain, marketing, customer support, and Customer Solution Center teams.



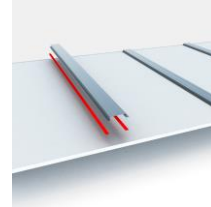
Signage



Doors and windows



Automotive



Construction



Transportation



Appliances



Leather and textiles



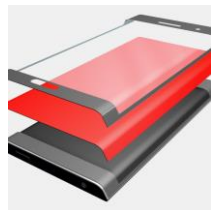
Retail



Renewable



Furniture



Electronics



Health and medical



From sketch to reality



Even with the most demanding requirements, we support you in finding the best possible solution. We know converting involves a variety of processes, such as:

Die-cutting

Punching

Lasering

Slitting

Rewinding

Laminating

Printing

Spooling

By combining your converting expertise with our high-quality products and expert adhesive consultancy, you can create customized products for all market needs.



Product excellence

Access to the broadest tesa product portfolio, including a selection of 60+ products handpicked for our Converter Partners, on which we guarantee quick sampling in different formats (mini-log, A4 sheets) and minimum order quantity of one log roll on most standard orders.



Expert support

Our sales personnel and converter experts are there to assist you with any customer request. Technical experts at tesa Customer Solution Centers also offer on-site and remote support and evaluation of your individual application under laboratory conditions.



Testing and validation

Our local experts and engineers will support you on-site and remotely, resorting to state-of-the-art equipment to perform:

- Comparative tests with competitor products
- Simulations under a wide range of environmental conditions
- Customized tests with customer substrates

tesa® plate mounting and process tapes:

The complete package for high-quality label printing.

①

Plate mounting: Increasing demands on print quality and process efficiency call for specifically tailored plate mounting tapes. Our tesa® Softprint assortment provides distinctive product lines for Converter Partners and flexo printers to fulfill each and every requirement.

②

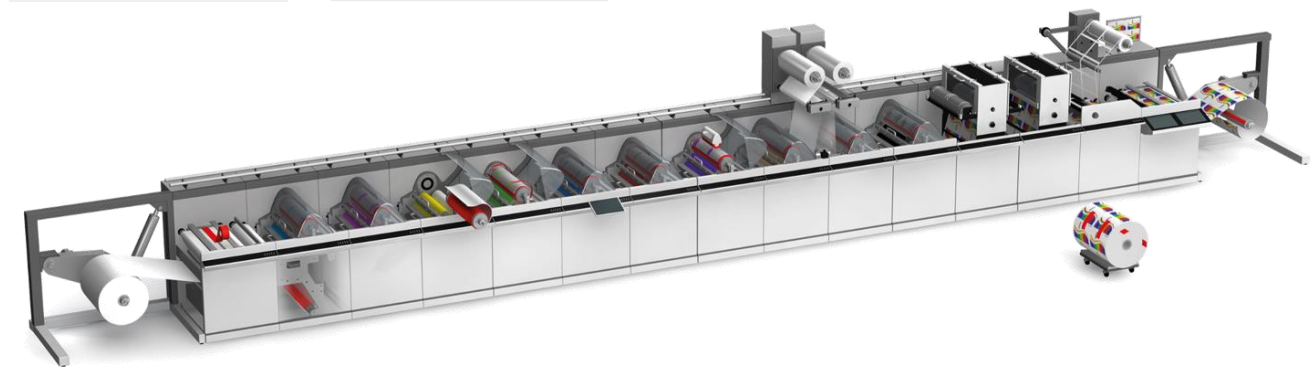
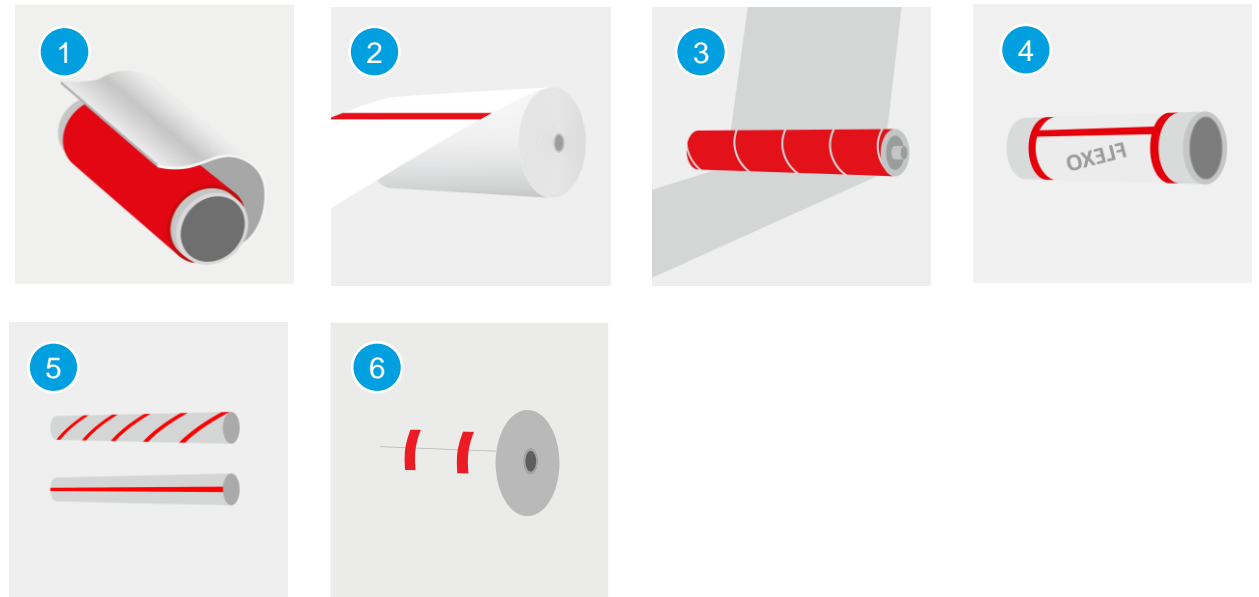
Splicing: To splice different materials we offer a comprehensive assortment of double-sided and single-sided splicing tapes.

③

Roller wrapping: tesa® Printer's Friend tapes offer outstanding grip to process high-slip materials and repel a variety of substances involved in the process (e.g. adhesives and inks).

Many more like: ④ edge sealing, ⑤ core starting,

⑥ end tabbing



tesa® Softprint foam tape assortment for flexographic label printing



Foam backing / carrier

Our tesa® Softprint assortment is supported by our smart tape production process – leaving all foam cells within the tape backing intact for better cushioning and resilience over time. Selecting the correct foam hardness from our assortment will produce exceptional print quality by increasing your printing speed and overcoming print defects like banding, increased dot gain, and “pin holing.”

tesa® Softprint 380 µm/15 mil category*

Product color code



X-Soft



Soft



Medium

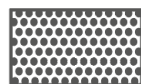


Medium-Hard



Hard

Print motif



Classic product design

tesa® Softprint STM	tesa® 52018	tesa® 52017	tesa® 52016	tesa® 52015	tesa® 52014	High tack adhesive for plate mounting in unclean and cold conditions. Secure bonding with excellent resistance to edge lifting.
tesa® Softprint STM-TP	tesa® 52118	tesa® 52117	tesa® 52116	tesa® 52115	tesa® 52114	Medium tack adhesive for reliable plate mounting under most conditions. Secure bonding with excellent resistance to edge lifting.
tesa® Softprint SEC	tesa® 52818	tesa® 52817	tesa® 52816	tesa® 52815	tesa® 52814	Low tack adhesive for easy and fast plate mounting for clean and standardized conditions. Secure bonding with excellent resistance to edge lifting.

Flex product design

tesa® Softprint FE	tesa® 53418	tesa® 53417	tesa® 53416	tesa® 53415	tesa® 53414	Compensating product design for demanding sleeve/cylinder surfaces. Low tack adhesive for easy and fast plate mounting for clean and standardized conditions. Secure bonding with excellent resistance to edge lifting.
--------------------	-------------	-------------	-------------	-------------	-------------	---

Adhesion promoter

tesa® 60153, 60152	Adhesion promoter: tesa® 60153 recommended for tesa® Softprint STM and tesa® Softprint TP tesa® 60152 recommended for tesa® Softprint SEC and tesa® Softprint FE					
--------------------	--	--	--	--	--	--

*Also available: tesa® Softprint 500 µm/20 mil category

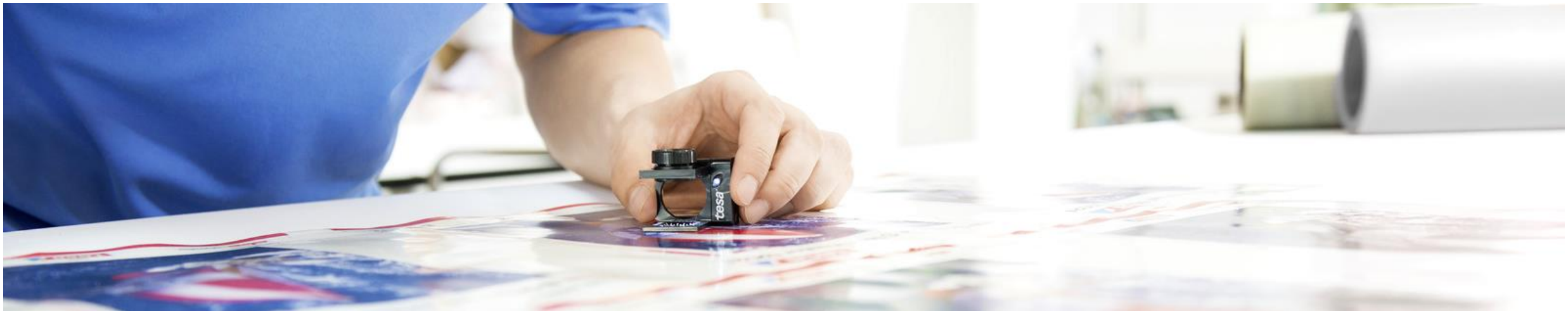
tesaprint® film plate mounting tapes

Filmic backing / carrier



These tapes can be used in a variety of different print jobs, for example, letterpress printing of labels. Our dedicated sales team will assist in choosing the most suitable tape for your process needs.

	Thickness category [µm/mil]	Backing	Adhesive	Liner	Tape characteristics and application examples
tesaprint® plate mounting for versatile use					
tesa® 52310	100/4	PVC, transparent	Natural rubber	PP, embossed	100 µm tape category for various plate mounting applications (e.g. letterpress plate mounting, plate mounting on compressible sleeves, and dry offset blanket mounting)
tesa® 52315	150/6	PVC, yellow	Natural rubber	PP, embossed	150 µm tape category for various plate mounting applications
tesa® 52320	200/8	PVC, white	Natural rubber	PP, embossed	200 µm tape category for various plate mounting applications
tesa® 52325	250/10	PVC, pink	Natural rubber	PP, embossed	250 µm tape category for various plate mounting applications



Complementary products from start ...

During converting and label printing many different parameters have an influence on the quality of the end product.

With our high-quality process tapes we supply the best possible solution to be successful in producing your required level of quality.

Our broad assortment is developed based on your individual needs.



	Special feature	Thickness [µm/mil]	Adhesive	Backing	Color
Splicing					
tesa® 51904	d/s tape with high tack, high adhesion for flying splice	110/4	Synthetic rubber	Non-woven	
tesa® 64620	d/s tape with low tack, medium adhesion for flying splice	185/7	Acrylic	PP	
tesa® 60404	s/s tape for butt splicing	67/3	Natural rubber	PVC	
tesa® 4122	s/s tape with high tear strength for butt splicing	88/3	Natural rubber	PVC	
tesa® 4137	s/s tape for butt splicing and inductive detection	50/2	Acrylic	PET	
Roller wrapping					
tesa® Printer's Friend 4863	Embossed surface	620/24	Natural rubber	Cloth	
tesa® Printer's Friend 4563	Smooth surface	380/15	Natural rubber	Cloth	
Edge sealing					
tesa® 4174	Flexible s/s tape	110/4	Natural rubber	PVC	
tesa® 60404	Rigid s/s tape	67/3	Natural rubber	PVC	
Core starting					
tesa® 60404	s/s tape for safe bonding on paper and PE cores	67/3	Natural rubber	PVC	
tesa® 51194*	Splittable d/s tape for flying splice labeling applications	120/5	Synthetic rubber/acrylic	Splittable paper	
tesa® 52307	d/s tape for safe bonding and easy release	70/3	Acrylic	PVC	

tesa® self-adhesive process tape assortment for flexographic label printing



... to finish for a great result.

Failure flagging

For marking material imperfections and print faults we provide various tape color options from our assortment.

End tabbing

To close converted reels for storage or later processing. Our tapes offer safe bonding on various substrates.

Supportive tools

We also offer supportive tools such as cleaning rollers and rubber rollers to make several process steps easier and more efficient.

	Special feature	Thickness [µm/mil]	Adhesive	Backing	Color
Failure flagging					
tesa® 60404	Different colors to mark material imperfections	67/3	Natural rubber	PVC	● ● ● ● ●
End tabbing					
tesa® 60404	Safe bonding on all kinds of materials	67/3	Natural rubber	PVC	● ● ● ● ●
Additional tools					
tesa® 52064	Plate cleaning				
tesa® 52065	Rubber roller				





Thank you for your attention!

Learn more about our company
www.tesa.com

